



PRIVATE LOCATION  
RIVERFRONT C/W LAKE ACCESS

***Brereton Lake Waterfront  
Block 5 Lot 18***

**\$189,000**

*Unique private location! This large irregular shaped lot is located on the easterly shore of the Rennie River close to its mouth, just off Brereton Lake. The waterway gives access to the lake while providing a sense of privacy and wildness not experienced on the lake shore. Nestled in the trees, this cottage property can give you that wilderness experience you have been looking for!!!*

- ◆ 756 SF cottage
- ◆ Plus 168 SF veranda
- ◆ 3 bedrooms
- ◆ One 3-piece bathroom
- ◆ Raised ceiling in living room
- ◆ Dock at waterfront on Rennie River
- ◆ Very private large lot: 109.1'(W), 267.4'(N/N/E), 201.7'on the arc(N/E), 150'(E/S/E), 406.5'(S/W)
- ◆ Lease renewal: 2039
- ◆ Enjoy fishing & boating on Brereton Lake!
- ◆ Built in 1989
- ◆ Cottage needs finishing
- ◆ Exterior is Ranch wall siding
- ◆ Holding tank for sewage
- ◆ Seasonal water system
- ◆ Double slider windows
- ◆ Fees: \$1835.35 (04/1/2018 to 03/31/2019)
- ◆ Multi use trail system nearby

***Louise Sampson, Broker  
Sampson's Realty Group  
Cottage: 204-369-5212 / Cell: 204-794-7473  
sampsons@mymts.net; www.sampsonsrealty.com***



The information contained herein has been obtained through sources deemed reliable by Louise Sampson & Sampson's Realty Group, but cannot be guaranteed as to its accuracy. The buyer is advised to obtain independent verification of any information which is of material interest to them.



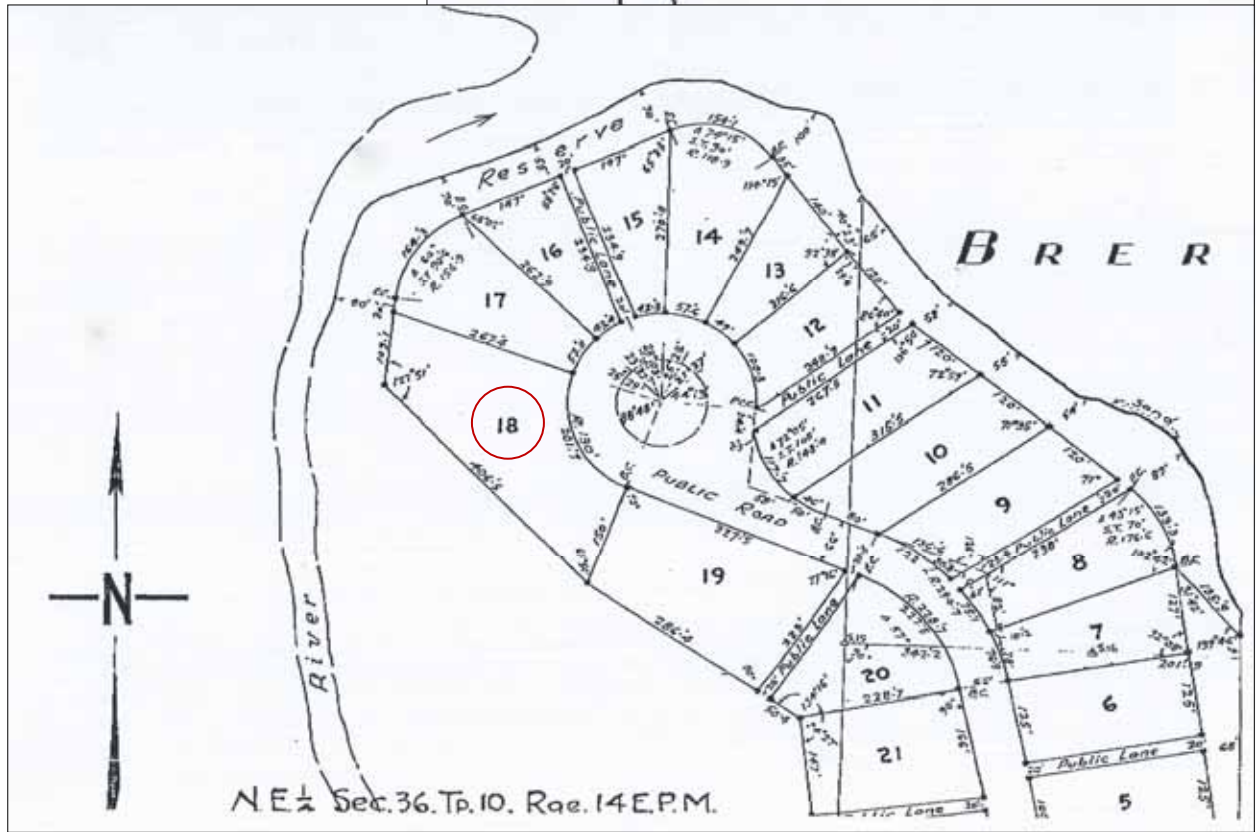
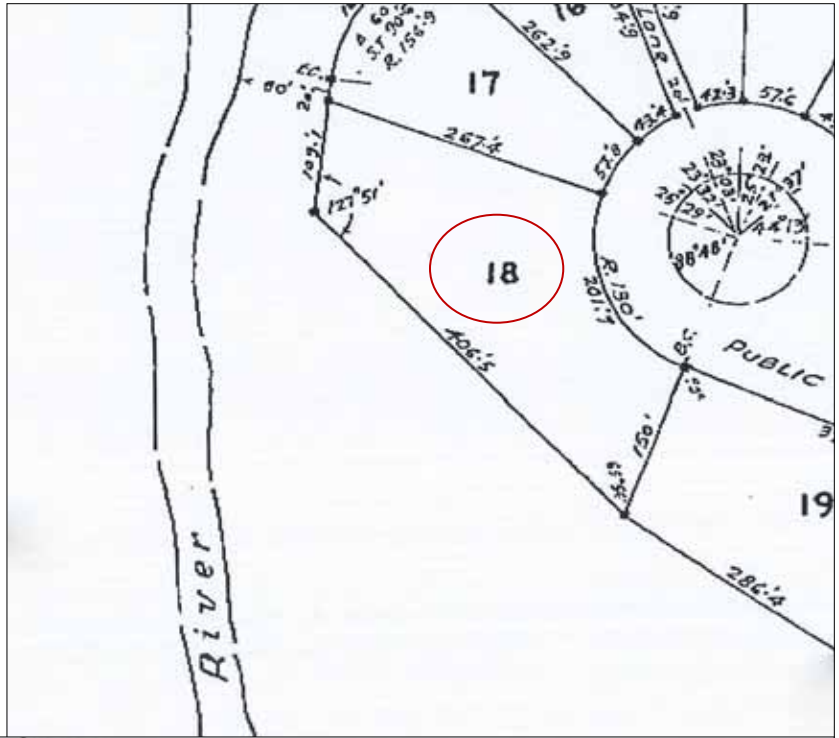






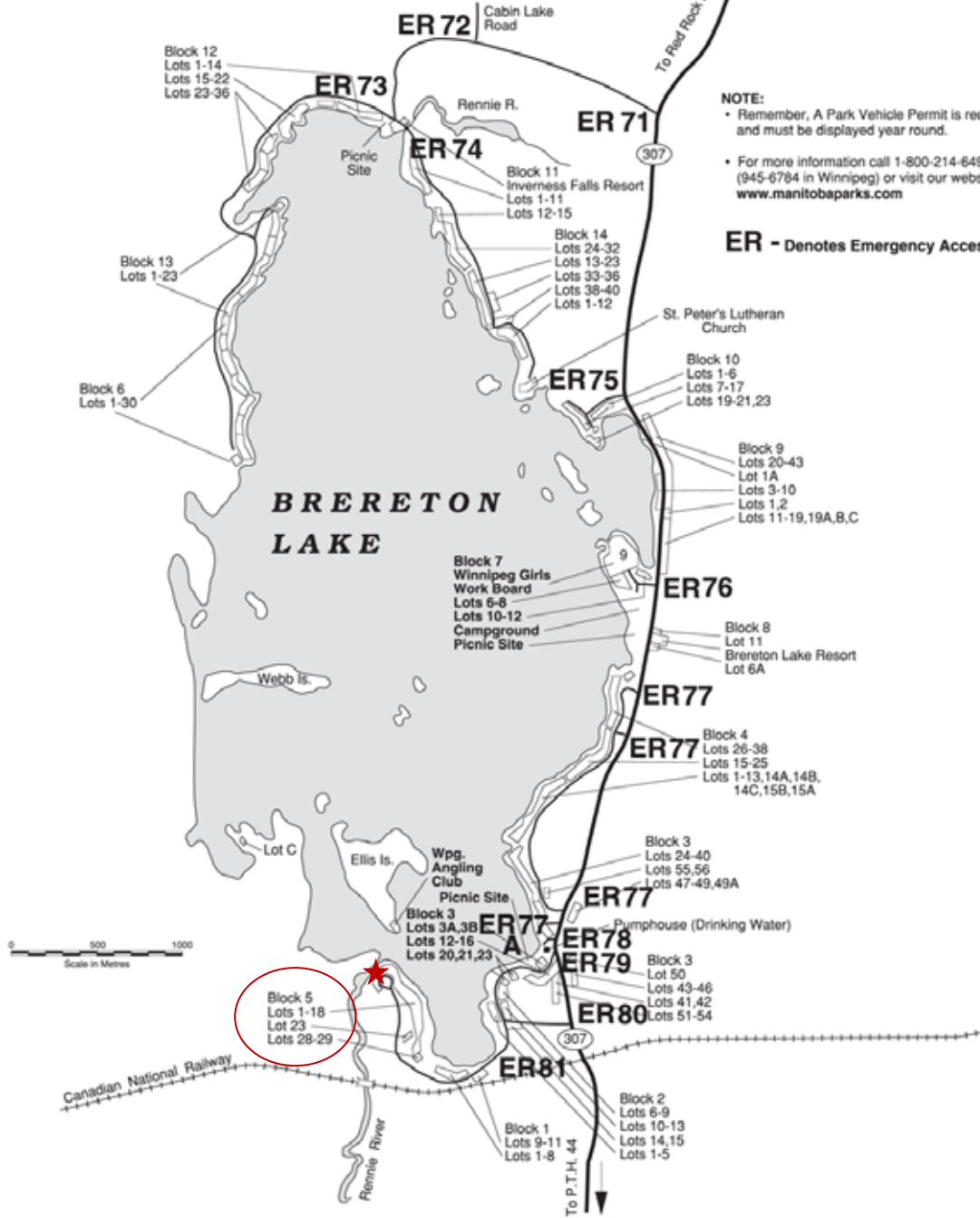


Lot 18  
Block 5  
Brereton Lake



# WHITESHELL PROVINCIAL PARK SUBDIVISION

## BRERETON LAKE



**NOTE:**

- Remember, A Park Vehicle Permit is required and must be displayed year round.
- For more information call 1-800-214-6497 (945-6784 in Winnipeg) or visit our website: [www.manitobaparks.com](http://www.manitobaparks.com)

**ER - Denotes Emergency Access Road**



**Louise Sampson, Broker**  
**Sampson's Realty Group**  
 Cottage: 204-369-5212 / Cell: 204-794-7473  
[sampsons@mymts.net](mailto:sampsons@mymts.net); [www.sampsonsrealty.com](http://www.sampsonsrealty.com)

